



TRIDENT HIGH SCHOOL ENROLMENT SCHEME

*The Ministry of Education put an Enrolment scheme in place in 2003.
– amended in September 2020*

Home Zone

All students who live within the home zone described below (and shown on the attached map) shall be entitled to enrol at the school.

- The boundary is a line that encompasses the roads feeding into the Ruatoki, Waimana and Matahi valleys and crosses SH2 at the junction with Bell Road and includes SH2 from Bell Road to Stanley Road, Fraser Road, Stanley Road to the junction with Wainui Road and extends to the entrance of Ohiwa Harbour. It is then drawn west along the coast to where it meets a line drawn north from the end of Powdrell Road, along Powdrell Road and extends south to include Luke Road and southeast to the junction of Angle Road and SH30. The line continues due east to Te Rahu Canal, northeast along the canal to Te Rahu Road, along Te Rahu Road, Station Road, and east along White Pine Bush Road.

Proof of residence within the zone may be required. A statutory declaration that the address entered on the enrolment form is the residence of the student during term time may be required.

Each year, applications for enrolment in the following year from in-zone students will be sought by a date that will be published in a daily or community newspaper circulating in the area served by the school. This will enable the Board of Trustees to assess the number of places that can be made available to students who live outside the home zone.

Special Programmes

The Special Education Centre is recognised as a Special Programme under Section 11 of the Education Act, being "a class or unit established by the school for which students are accepted on the basis of special education needs arising from learning and behaviour difficulties, sensory, intellectual, communication or physical disabilities, or any combination of these."

The special programme status allows the Board to enrol to the unit from outside its zone if spaces are available, as first priority Out of Zone applicants. Potential space constraints mean the Board will need to ensure, if there are more in-zone Ongoing and Reviewable Resourcing Scheme verified students than the unit can accommodate, that the school can meet their needs within the mainstream setting.

This school operates a centre for students with intellectual disabilities capped at 25 students. Students who live within the school's home zone and meet the criterion for enrolment in this special programme will be enrolled ahead of out-of-zone students. Acceptance into the programme requires students to be verified as eligible for the Ongoing and Reviewable Resourcing Scheme.

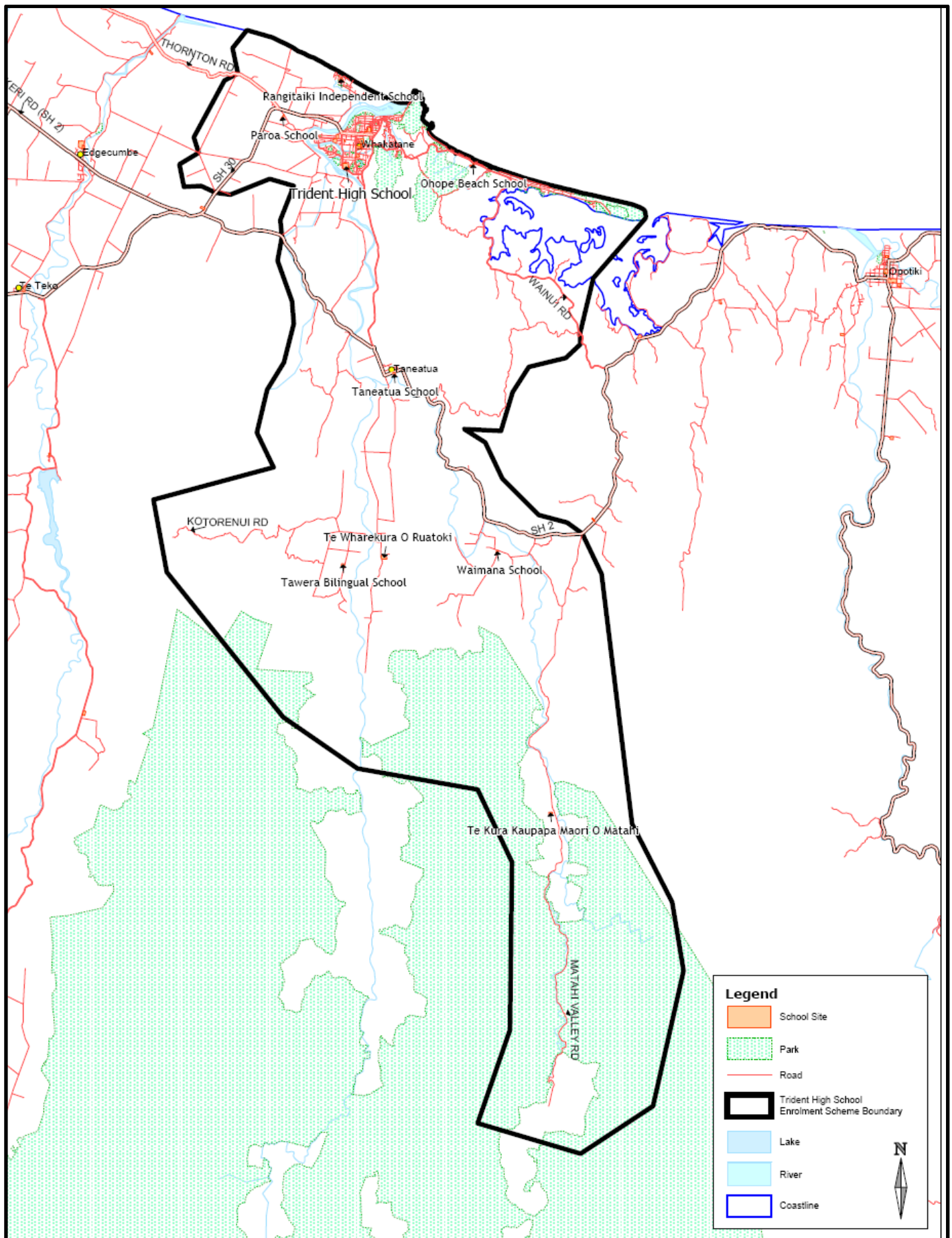
First Priority will be given to students who have been accepted for enrolment in the centre for intellectually disabled students subject to the Ministry of Education cap on roll.

Ballot Priority

Applications for enrolment will be processed in the following order of priority:

- | | |
|------------------------|--|
| <u>Second Priority</u> | will be given to applicants who are siblings of current students |
| <u>Third Priority</u> | will be given to applicants who are siblings of former students |
| <u>Fourth Priority</u> | will be given to applicants who is a child of a former student of the school |
| <u>Fifth Priority</u> | will be given to applicants who are children of Board employees |
| <u>Sixth Priority</u> | will be given to all other applicants. |

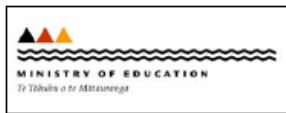
If there are more applicants in the second, third, fourth and fifth priority groups than there are places available, a selection within the priority group will be by ballot conducted in accordance with instructions issued by the Secretary for Education under section 11G(1) of the Education Act 1989. Parents will be informed of the date of any ballot by notice in a daily or community newspaper circulating in the area served by the school. Applicants seeking second and third priority status may be required to give proof of a sibling relationship.



Legend

- School Site
- Park
- Road
- Trident High School Enrolment Scheme Boundary
- Lake
- River
- Coastline

N
↑



August 2007

Trident High School Enrolment Scheme Boundary

Sourced from LINZ data. Crown and Critchlow. Copyright reserved. Census boundaries from Statistics NZ.